



27 March 2024

HON. GLEN A. PANGAPALAN

General Manager

PHILIPPINE FISHERIES DEVELOPMENT AUTHORITY (PFDA)

2/F PCA, Annex Bldg. I, Elliptical Rd.

Diliman, Quezon City

RE: TRANSMITTAL OF 2024 PERFORMANCE SCORECARD

Dear GM Pangapalan,

This is to formally transmit the 2024 Charter Statement and Strategy Map (**Annex A**) and 2024 Performance Scorecard (**Annex B**) of the **Philippine Fisheries Development Authority (PFDA)**. The same is to be posted in **PFDA's** website, in accordance with Section 43 of GCG Memorandum Circular (M.C.) No. 2012-07.¹

The PFDA-proposed Strategy Map and Performance Scorecard submitted through a letter dated 20 October 2023² were **MODIFIED** based on the discussions made during the Technical Panel Meeting (TPM) held on 12 December 2023, evaluation of revised documents submitted through letters dated 27 December 2023³ and 11 January 2024,⁴ and finalized during the Performance Target Conference (PTC) held on 27 March 2024.

We remind PFDA that Item 6 of GCG M.C. No. 2023-01⁵ requires GOCCs to submit its Quarterly Targets within 15 calendar days from receipt of the GCG-approved Performance Scorecard. Moreover, Item 7 of the same Circular directs GOCCs to accomplish the requisite Quarterly Monitoring Reports detailing its progress in accomplishing its performance targets. The Quarterly Monitoring Reports should disclose substantial changes in circumstances that were unforeseen during the TPM that may affect the timely achievement of targets.

FOR PFDA'S INFORMATION AND COMPLIANCE.

Very truly yours,

ATTY. MARIUS P. CORPUS

Chairperson

ATTY. BRIAN KEITH F. HOSAKA

Commissioner

**ATTY. GERALDINE MARIE B.
BERBERABE-MARTINEZ**

Commissioner

¹ CODE OF CORPORATE GOVERNANCE FOR GOCCs, dated 28 November 2012.

² Officially received by the Governance Commission on 17 November 2023.

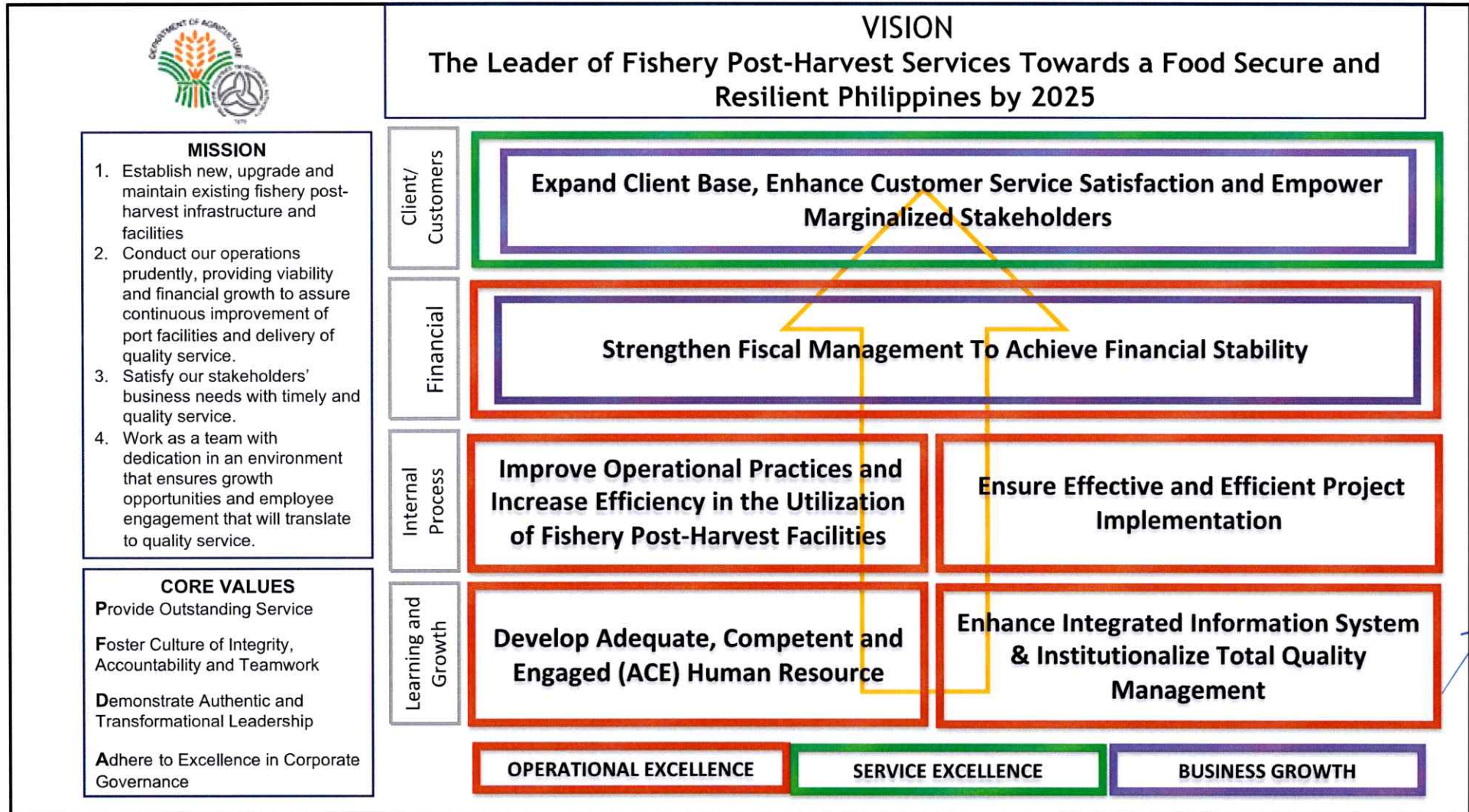
³ Officially received by the Governance Commission on 27 December 2023.

⁴ Officially received by the Governance Commission on 11 January 2024.

⁵ PERFORMANCE EVALUATION SYSTEM (PES) FOR THE GOCC SECTOR, dated 19 January 2023.



PHILIPPINE FISHERIES DEVELOPMENT AUTHORITY (PFDA)



PHILIPPINE FISHERIES DEVELOPMENT AUTHORITY (PFDA)

Component					Baseline		Target		
Objective/Measure		Formula	Wt.	Rating System ^{a/}	2021	2022	2023	2024	
CLIENT/CUSTOMERS	SO 1	Expand Client Base, Enhance Customer Service Satisfaction and Empower Marginalized Stakeholders							
	SM 1	Client/Port Users Served (with PTCB)	Total number of port clients served with Permit to Conduct Business (PTCB)	10%	Actual / Target	46,230	43,696	42,100	40,000
	SM 2	Percentage of Satisfied Customers	Number of respondents who gave at least a Satisfactory rating / Total number of respondents	5%	Actual / Target 0% = If less than 80%	Non-compliant with CSS Guidelines	0%	86%	90%
	Subtotal		15%						
FINANCIAL	SO 2	Strengthen Fiscal Management to Achieve Financial Stability							
	SM 3	Return on Equity (ROE)	Net income / Average equity	5%	Actual / Target	9.68% ^{a/}	6.01%	N/A	3.93%
	SM 4	Collection Efficiency (current)	Total collection of current accounts / Total billings	5%	Actual / Target	92.69%	93.53%	93%	92.17%

Component						Baseline		Target	
Objective/Measure			Formula	Wt.	Rating System ^{a/}	2021	2022	2023	2024
FINANCIAL	SM 5	Collection Efficiency (arrears)	Total collection of arrears / Net arrears receivables	3%	Actual / Target	25.14%	28.81%	50.47%	28.73%
	SM 6	Budget Utilization Rate (BUR)							
		a. Subsidy							
		i. Obligation Rate							
		Current	Total Obligated Subsidy over Total COB from Subsidy	1%	Actual / Target	N/A	96.58%	90%	90%
		Carry-over	[both net of PS Cost]	1%	Actual / Target	N/A	65.56%	90%	90%
		ii. Disbursement Rate							
	Current	Total Disbursement over Total Obligation [both net of PS Cost]	1%	Actual / Target	N/A	40.49%	90%	90%	

Component					Baseline		Target		
Objective/Measure		Formula	Wt.	Rating System ^{a/}	2021	2022	2023	2024	
	Carry-over	Total Disbursement over Total Obligation [both net of PS Cost]	1%	Actual / Target	N/A	78.75%	90%	90%	
	b. Disbursement Rate of Internally Generated Fund (IGF)	Total Disbursement from IGF over Total COB from IGF [both net of PS Cost]	1%	Actual / Target	N/A	71.09%	90%	90%	
	Subtotal		18%						
INTERNAL PROCESS	SO 3	Improve Operational Practices and Increase Efficiency in Utilization of Fishery Post-Harvest Facilities							
	SM 7	Utilization Rate of Port Facilities:							
		a. Pier/Quay	Utilized Capacity over Maximum Capacity	5%	Actual / Target	N/A	N/A	100%	100%
		b. Market Hall		5%	Actual / Target	96.07%	95.40%	96%	96%
		c. Cold Storage		4%	Actual / Target	65.23%	60.55%	83%	67%
		d. Ice Plant		4%	Actual / Target	70.96%	76.86%	82%	78%

Component					Baseline		Target		
Objective/Measure		Formula	Wt.	Rating System ^{a/}	2021	2022	2023	2024	
INTERNAL PROCESS	e. Processing Areas	Utilized Capacity over Maximum Capacity	4%	Actual / Target	58.84%	59.86%	72%	72%	
	f. Building Spaces, Commercial, and Industrial Areas		5%	Actual / Target	78.80%	86.51%	89%	86%	
	SO 4	Ensure Effective and Efficient Project Implementation							
	SM 8	Rehabilitation/Repair and Efficient Project Implementation							
		a. Developmental Projects							
		a.1. Detailed Engineering Design	Absolute Number	2%	Actual / Target	5	7	-	4
		a.2 Number of Projects Started	Absolute Number	3%	Actual / Target	-	5	-	10
		b. Regional Fish Port Complex Projects (Multi-Year)							
	b.1. IFPC	Actual Percentage of Completion	3%	Actual / Target	58.01%	80.95937%	100%	100%	

Component						Baseline		Target	
Objective/Measure			Formula	Wt.	Rating System ^{a/}	2021	2022	2023	2024
INTERNAL PROCESS	SM 8	b.2. ZFPC	Actual Percentage of Completion	3%	Actual / Target	Project in mobilization stage	27.7697%	68.45%	100%
		b.3. NFPC – Phase 1	Actual Percentage of Completion	5%	Actual / Target	Package 1, 2, and 3 in mobilization stage Package 4 and 5 – Contract awarded on December 2021	Package 1: 69.1600% Package 2: 78.4626% Package 3: 84.2833% Package 4: 31.40554% Package 5: 23.0525%	100%	93.6078%
		b.4. NFPC – Phase 2	Actual Percentage of Completion	3%	Actual / Target	N/A	Package 1: 30.1710% Package 2: 10.1400% Package 3: 10.0900%	90.85%	100%
		b.5. CFP	Actual Percentage of Completion	3%	Actual / Target	Project in mobilization stage	21.74271%	100%	100%

MS

Component					Baseline		Target		
Objective/Measure		Formula	Wt.	Rating System ^{a/}	2021	2022	2023	2024	
	b.6. GSFPC	Actual Percentage of Completion	2%	Actual / Target	N/A	-	2%	18.4367%	
	Subtotal		51%						
LEARNING AND GROWTH	SO 5	Develop Adequate, Competent, and Engaged (ACE) Human Resource							
	SM 9	Percentage of Incumbents Meeting Required Competencies	Percentage of Incumbents Meeting the Required Competencies over Total Employees	5%	Actual / Target	10.08% improvement from baseline	Re-establish baseline (79.51%)	10% improvement from the baseline	5% improvement from prior year
	SO 6	Enhance Integrated Information Systems and Institutionalize Total Quality Management System							
	SM 10	Percentage of Attainment of ISSP Deliverables	Actual number of ISSP met over total number of ISSP deliverables	6%	Actual / Target	4 systems developed	3 systems developed 4 systems installed 3 systems enhanced	100% (5 systems)	100% (8 systems)

Component					Baseline		Target	
Objective/Measure		Formula	Wt.	Rating System ^{a/}	2021	2022	2023	2024
LEARNING AND GROWTH	SM 11	ISO 9001:2015 Certification	Milestone	5%	Actual / Target	-	Passed six (6) surveillance audit (CO, NFPC, GSFP, IFPC, DFPC, LFPC) One (1) ISO-aligned QMS (SFP)	Pass seven (7) surveillance audits (CO, NFPC, GSFP, IFPC, DFPC, LFPC, ZFPC) ISO 9001:2015 Certification of the Refrigeration Business Process of LFPC, DFPC and IFPC. Pass 1 st surveillance audits (CO, ZFPC)
	Subtotal		16%					
	TOTAL		100%					

a/ No-GCG-validated accomplishment; ROE is derived from 2020 and 2021 COA-Audited Financial Statements

For GCG:


HON. MARIUS P. CORPUS
Chairperson

For PFDA:


HON. GLEN A. PANGAPALAN
General Manager