



28 June 2022

MR. WILLIAM D. DAR, PH.D.

Chairperson and DA Secretary

ATTY. GLEN A. PANGAPALAN

General Manager

PHILIPPINE FISHERIES DEVELOPMENT AUTHORITY (PFDA)

2/F PCA Annex Bldg. I, Elliptical Rd.,
Diliman, Quezon City

PFDA-GSD-EL0

DTS NO. 0731-22

RECEIVED
JUL 04 2022

BY chel
PHIL. FISHERIES DEV'T. AUTHORITY
RECORDS GSD-ASD

RE : TRANSMITTAL OF 2022 PERFORMANCE SCORECARD

Dear Secretary Dar and GM Pangapalan,

This is to formally transmit the Charter Statement and Strategy Map (**Annex A**), and 2022 Performance Scorecard (**Annex B**) of PFDA. The same is to be posted in PFDA's website, in accordance with Section 43 of GCG Memorandum Circular (M.C.) No. 2012-07.¹

The PFDA's proposed Charter Statement and Strategy Map submitted through its letters dated 31 August 2021² and 02 November 2021³ were **RETAINED** while the Performance Scorecard was **MODIFIED** based on the discussions made during the online technical panel meeting (TPM) held on 23 December 2021 via Microsoft Teams and evaluation of supporting documents submitted through its letters dated 13 January 2022⁴ and 28 January 2022.⁵

We take this opportunity to remind PFDA that Item 5 of GCG M.C. No. 2017-02⁶ mandates GOCCs to submit Quarterly Monitoring Reports and upload the same in the GOCC's website within thirty (30) calendar days from the close of each quarter. PFDA is thus requested to submit its revised Quarterly Targets based on the attached Scorecard upon submission of its Quarterly Monitoring Report for 2022.

Finally, under GCG M.C. No. 2017-02, GOCCs can no longer renegotiate the targets set in their Performance Scorecards for the current year. Thus, any request for modification in the 2022 Performance Scorecard will instead be considered during the validation of the reported annual accomplishments.

FOR PFDA'S INFORMATION AND GUIDANCE.

Very truly yours,

SAMUEL G. DAGPIN, JR.

Chairman

JAYPEE O. ABESAMIS

*OIC-Commissioner**

MARITES C. DORAL

Commissioner

¹ CODE OF CORPORATE GOVERNANCE FOR GOCCs, dated 28 November 2012.

² Officially received by the Governance Commission on 31 August 2021.

³ Officially received by the Governance Commission on 03 November 2021.

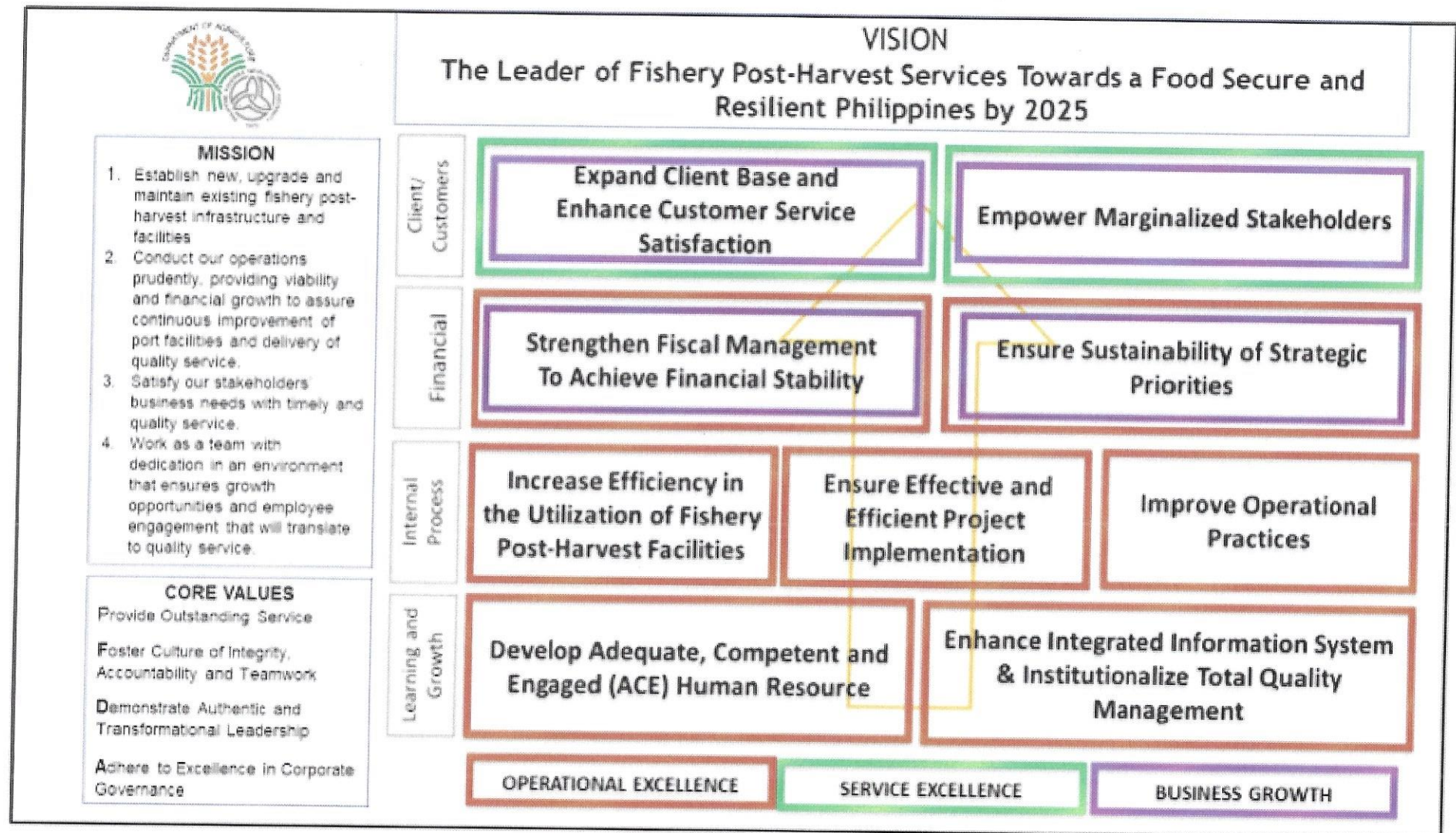
⁴ Officially received by the Governance Commission on 14 January 2022.

⁵ Officially received by the Governance Commission on 28 January 2022.

⁶ INTERIM PES FOR THE GOCC SECTOR, dated 30 June 2017.

* By virtue of the Memorandum from the Executive Secretary dated 21 March 2022.

PHILIPPINE FISHERIES DEVELOPMENT AUTHORITY (PFDA)



PHILIPPINE FISHERIES DEVELOPMENT AUTHORITY (PFDA)

Component					Baseline		Target		
Objective/Measure		Formula	Wt.	Rating System ^{a/}	2019	2020	2021	2022	
CLIENT/CUSTOMERS	SO 1	Expand Client Base and Enhance Customers Service Satisfaction							
	SM 1	Client/Port Users Served (with PTCB)	Total number of port clients served with Permit to Conduct Business (PTCB)	10%	Actual over Target	34,990	49,457	35,000	47,000
	SM 2	Percentage of Satisfied Customers	Number of respondents which gave at least a Satisfactory rating/ Total number of respondents		Actual over Target 0% = if less than 80%	85.09%	Non-compliant with CSS guideline	86%	86%
		a. Lessees		2%					
		b. Market Operators		1%					
		c. Processor, Ice Plant and Cold Storage Operators		1%					
		d. Other PTCB Holders		1%					
	SO 2	Empower Marginalized Stakeholders							
Subtotal			15%						
FINANCE	SO 3	Strengthen Fiscal Management to Achieve Financial Stability							
	SM 3	Return on Asset (ROA)	Net Income / Average Asset	5%	Actual over Target	N/A	N/A	N/A	3.48%

2022 Performance Scorecard

Component					Baseline		Target		
Objective/Measure		Formula	Wt.	Rating System ^{a/}	2019	2020	2021	2022	
FINANCE	SM 4	Return on Equity (ROE)	Net Income / Average Equity	5%	Actual over Target	N/A	N/A	N/A	9.10%
	SM 5	Collection Efficiency (current)	Total collection of current accounts/ Total billings	5%	Actual over Target	91.64%	90.70%	95%	93%
	SM 6	Collection Efficiency (arrears)	Total collection of arrears/ Net arrear receivables	3%	Actual over Target	32.43%	35.28%	50.47%	50.47%
	SM 7	Budget Utilization Rate							
		a. Subsidy							
		i. Obligation Rate							
		Current	Total Obligated Subsidy over Total COB from Subsidy [both net of PS Cost]	1%	Actual over Target	N/A	N/A	N/A	90%
Carry-over		1%	N/A	N/A		N/A	90%		

Component					Baseline		Target		
Objective/Measure		Formula	Wt.	Rating System ^{a/}	2019	2020	2021	2022	
FINANCE	ii. Disbursement Rate								
	Current	Total Disbursement over Total Obligations [both net of PS Cost]	1%	Actual over Target	N/A	N/A	N/A	90%	
	Carry-over		1%		N/A	N/A	N/A	90%	
	b. Disbursement Rate of Internally generated fund	Total Disbursement from IGF over Total COB from IGF [both net of PS Cost]	1%	Actual over Target	N/A	N/A	N/A	90%	
	SO 4 Ensure Sustainability of Strategic Priorities								
	Subtotal		23%						
INTERNAL PROCESS	SO 5 Increase Efficiency in the Utilization of Fishery Post-harvest Facilities								
	Utilization Rate of Port Facilities:								
	SM 8	a. Market Hall	Utilized Capacity over Maximum Capacity	5%	Actual over Target	85.39%	95.47%	96%	96%
		b. Cold Storage		4%	Actual over Target	59.06%	69.82%	67%	73%

Component						Baseline		Target		
Objective/Measure			Formula	Wt.	Rating System ^{a/}	2019	2020	2021	2022	
INTERNAL PROCESS		c. Ice plant		4%	Actual over Target	45.01%	64.73%	66%	82%	
		d. Processing Areas and Building Spaces		4%	Actual over Target	59.62%	64.77%	63%	81%	
		e. Commercial and Industrial Area		4%	Actual over Target	59.71%	83.65%	84%	86%	
	SO 6	Ensure Effective and Efficient Project Implementation								
	SM 9	Rehabilitation/Repair/Improvement projects								
		a. No. of Projects								
		a.1. Detailed Engineering Design	Absolute Number	0%	Actual over Target	N/A	N/A	11	6	
		a.2. Project Implementation	Absolute Number	0%	Actual over Target	N/A	N/A	8	7	
		a.3. Project Completion	Absolute Number	2%	Actual over Target	N/A	N/A	N/A	5	
		b. On-going project (multi-year)								
	b.1. IFPC	Actual percentage of completion	3%	Actual over Target	N/A	35.84%	45%	94.85%		

INTERNAL PROCESS

Component					Baseline		Target	
Objective/Measure		Formula	Wt.	Rating System ^{a/}	2019	2020	2021	2022
INTERNAL PROCESS	Package 1	Actual percentage of completion	0.5%	Actual over Target	N/A	N/A	N/A	10%
	Package 2		0.5%	Actual over Target	N/A	N/A	N/A	10%
	Package 3		0.5%	Actual over Target	N/A	N/A	N/A	10%
	b.7. SFP	Actual percentage of completion	2%	Actual over Target	N/A	Detailed Engineering and Design not completed	20%	48.87%
	b.8. CFP	Actual percentage of completion	3%	Actual over Target	N/A	Detailed Engineering and Design not completed	20%	77.71%
	b.9. GSFPC	Milestone	2%	All or Nothing	N/A	N/A	N/A	Commence Detailed Engineering and Design
	SO 7	Improve Operational Practices						
Subtotal			46%					

Component					Baseline		Target		
Objective/Measure		Formula	Wt.	Rating System ^{a/}	2019	2020	2021	2022	
LEARNING & GROWTH	SO 8	Develop Adequate, Competent, Engaged (ACE) Human Resource							
	SM 10	Percentage of Incumbents Meeting Required Competencies	Percentage of Incumbents Meeting the Required Competencies over Total Employees	5%	Actual over Target	77.89%	88.86%	10% improvement from baseline	Re-establish baseline
	SO 9	Enhance Integrated Information Systems and Institutionalize Total Quality Management System							
	SM 11	Automation of PFDA's Operation							
		a. Development of Systems	Absolute Number	2%	Actual over Target	2 systems	2 systems	4 systems	3 systems
		b. Installation of Systems	Absolute Number	2%	Actual over Target	3 systems in all ports and CO	2 systems	2 systems	4 systems
		c. Enhancement of Systems	Absolute Number	2%	Actual over Target	N/A	N/A	2 systems	3 systems

Component						Baseline		Target	
Objective/Measure			Formula	Wt.	Rating System ^{a/}	2019	2020	2021	2022
LEARNING & GROWTH	SM 12	ISO Certification	Milestone	5%	Actual over Target	ISO 9001:2015 Recertification (5 ports) and ISO 9001:2015 Certification (Central Office, ZFPC and SFP)	Recertification (CO, NFPC, GFPC, IFPC, DFPC, LFPC, ZFPC)	Recertification (CO, NFPC, GFPC, IFPC, DFPC, LFPC, ZFPC)	Pass seven (7) surveillance audits (CO, NFPC, GSFP, IFPC, DFPC, LFPC, ZFPC) Three (3) ISO-aligned QMS (BFP, CFP, SFP)
	Subtotal			16%					
	TOTAL			100%					

a/ But not to exceed the weight assigned per indicator.