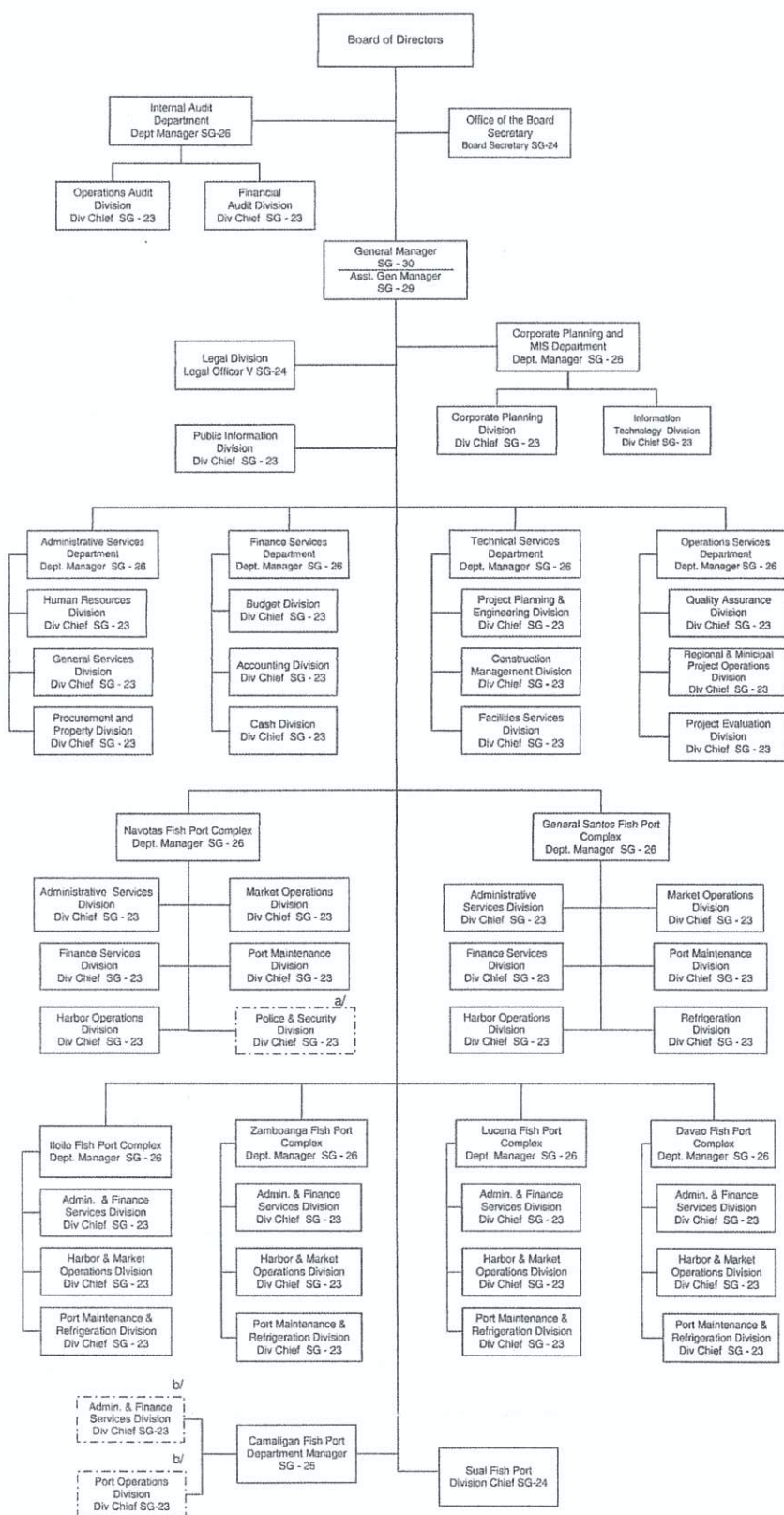


**Philippine Fisheries Development Authority**  
**Organizational Structure**  
**As Rationalized**



a/ The Police and Security Division (NFPC) shall be abolished once the incumbent Division Chief vacates the position. All positions in the PSD shall also be abolished once vacated by the incumbents.

b/ The Administrative and Finance Services Division and the Port Operations Division (CFP) shall be abolished once the incumbent Division Chiefs of both units vacate their positions.

Approved by:

**ROLANDO G. ANDAYA, Jr.**  
 Secretary

Department of Budget and Management



2009-00009L

No. of Positions	FROM (For Abolition)			No. of Positions	TO (Replaced Position)		
	Position Title	SG	Salary		Position Title	SG	Salary
<b>PORT MAINTENANCE DIVISION</b>							
1	Engineer II	16	204,708	1	Engineer III	19	243,816
1	Engineer I	12	162,144	1	Engineer II	16	204,708
2	Mechanic II	6	220,896	2	Electrician Foreman	9	270,600
1	Utility Worker II	3	87,684	1	Admin. Assistant	8	126,456
<b>GENERAL SANTOS FISH PORT COMPLEX</b>							
<b>ADMINISTRATIVE SERVICES DIVISION</b>							
1	Human Resource Mgmt. Assistant	8	126,456	1	Records Officer I	10	144,312
<b>FINANCE SERVICES DIVISION</b>							
2	Cashier I	10	288,624	2	Cash Clerk III	8	252,912
1	Computer Operator II	9	135,300	1	Cashier II	14	182,172
2	Clerk III	6	220,896	2	Accounting Clerk III	8	252,912
1	Bill Collector	5	102,264	1	Credit Officer IV	18	230,016
1	Bill Collector	5	102,264	1	Credit Officer III	15	193,116
1	Bill Collector	5	102,264	1	Cash Clerk III	8	126,456
5	Utility Worker II	3	438,420	5	Cash Clerk III	8	632,280
<b>HARBOR OPERATIONS DIVISION</b>							
1	Wharfinger I	6	110,448	1	Admin. Assistant	8	126,456
2	Lighthouse Keeper II	5	204,528	2	Harbor Opns. Assistant	8	252,912
<b>MARKET OPERATIONS DIVISION</b>							
1	Fishery Market Operations Officer II	13	171,876	1	Fishery Market Opns. Supervisor I	18	230,016
1	Fishery Market Operations Officer II	13	171,876	1	Fishery Market Operations Officer I	11	152,976
1	Clerk III	6	110,448	1	Fishery Market Operations Officer I	11	152,976
1	Clerk III	6	110,448	1	Admin. Assistant	8	126,456
3	Utility Worker II	3	263,052	3	Fishery Market Operations Officer I	11	458,928
5	Utility Worker II	3	438,420	5	Fishery Market Opns. Assistant	8	632,280
<b>REFRIGERATION DIVISION</b>							
1	Mechanical Plant Operator II	6	110,448	1	Mechanic II	6	110,448
3	Heavy Eqpt. Operator I	4	284,076	3	Mechanic II	6	331,344
1	Utility Worker II	3	87,684	1	Admin. Assistant	8	126,456
<b>PORT MAINTENANCE DIVISION</b>							
1	Engineer II	16	204,708	1	Engineer III	19	243,816
1	Draftsman II	8	126,456	1	Engineering Assistant	8	126,456
1	Electrician/Mechanic I	4	94,692	1	Admin. Assistant	8	126,456
<b>DAVAO FISH PORT COMPLEX</b>							
<b>ADMIN. AND FINANCE SERVICES DIVISION</b>							
1	Accountant IV	22	279,528	1	Accountant III	18	230,016
1	Budget Officer III	18	230,016	1	Budget Officer II	15	193,116
1	Clerk III	6	110,448	1	Credit Officer III	15	193,116
1	Bill Collector	5	102,264	1	Cash Clerk III	8	126,456
1	Driver II	4	94,692	1	Human Resource Mgmt. Officer I	11	152,976
3	Utility Worker II	3	263,052	3	Cash Clerk III	8	379,368
1	Utility Worker II	3	87,684	1	Buyer III	9	135,300
<b>HARBOR &amp; MARKET OPERATIONS DIVISION</b>							
1	Fishery Market Operations Officer II	13	171,876	1	Harbor Master I	12	162,144
1	Utility Worker II	3	87,684	1	Harbor Master I	12	162,144
<b>PORT MAINTENANCE &amp; REFRIGERATION DIVISION</b>							
1	Engineer IV	22	279,528	1	Engineer III	19	243,816
1	Engineer III	19	243,816	1	Engineer II	16	204,708
2	Mechanical Plant Operator II	6	220,896	2	Mechanic II	6	220,896
1	Utility Worker II	3	87,684	1	Engineering Assistant	8	126,456
1	Utility Worker II	3	87,684	1	Admin. Assistant	8	126,456

*mba*



FROM (For Abolition)				TO (Replaced Position)			
No. of Positions	Position Title	SG	Salary	No. of Positions	Position Title	SG	Salary
<b>ILOILO FISH PORT COMPLEX</b>							
<u>ADMIN. AND FINANCE SERVICES DIVISION</u>							
1	Clerk III	6	110,448	1	Cash Clerk III	8	126,456
1	Bill Collector	5	102,264	1	Cash Clerk III	8	126,456
2	Utility Worker II	3	175,368	2	Cash Clerk III	8	252,912
<u>HARBOR &amp; MARKET OPERATIONS DIVISION</u>							
1	Fishery Market Operations Officer III	15	193,116	1	Fishery Market Operations Supervisor I	18	230,016
2	Fishery Market Operations Officer II	13	343,752	2	Harbor Master I	12	324,288
1	Communications Equipment Operator II	6	110,448	1	Admin. Assistant	8	126,456
<u>PORT MAINTENANCE &amp; REFRIGERATION DIVISION</u>							
1	Engineer IV	22	279,528	1	Engineer III	19	243,816
1	Mechanical Plant Operator II	6	110,448	1	Mechanic II	6	110,448
1	Utility Worker II	3	87,684	1	Electrician Foreman	9	135,300
1	Utility Worker II	3	87,684	1	Admin. Assistant	8	126,456
<b>LUCENA FISH PORT COMPLEX</b>							
<u>ADMIN. AND FINANCE SERVICES DIVISION</u>							
1	Bill Collector	5	102,264	1	Cash Clerk III	8	126,456
1	Security Guard II	5	102,264	1	Human Resource Mgnt. Officer I	11	152,976
1	Utility Worker II	3	87,684	1	Cash Clerk III	8	126,456
<u>HARBOR &amp; MARKET OPERATIONS DIVISION</u>							
1	Harbor Master II	15	193,116	1	Fishery Market Opns. Supervisor I	18	230,016
2	Fishery Market Operations Officer II	13	343,752	2	Harbor Master I	12	324,288
<u>PORT MAINTENANCE &amp; REFRIGERATION DIVISION</u>							
1	MPO/Electrician II	6	110,448	1	Engineer II	16	204,708
1	MPO/Electrician II	6	110,448	1	Engineering Assistant	8	126,456
1	Utility Worker II	3	87,684	1	Electrician Foreman	9	135,300
1	Utility Worker II	3	87,684	1	Admin. Assistant	8	126,456
<b>ZAMBOANGA FISH PORT COMPLEX</b>							
<u>ADMIN. AND FINANCE SERVICES DIVISION</u>							
1	Cashier II	14	182,172	1	Cash Clerk III	8	126,456
1	Credit Officer II	11	152,976	1	Credit Officer III	15	193,116
4	Utility Worker II	3	350,736	4	Cash Clerk III	8	505,824
1	Utility Worker II	3	87,684	1	Human Resource Mgnt. Officer I	11	152,976
1	Utility Worker II	3	87,684	1	Buyer III	9	135,300
<u>HARBOR &amp; MARKET OPERATIONS DIVISION</u>							
1	Harbor Master IV	22	279,528	1	Fishery Market Opns. Supervisor I	18	230,016
2	Fishery Market Operations Officer II	13	343,752	2	Harbor Master I	12	324,288
1	Communications Equipment Operator II	6	110,448	1	Admin. Assistant	8	126,456
<u>PORT MAINTENANCE &amp; REFRIGERATION DIVISION</u>							
1	Draftsman II	8	126,456	1	Engineering Assistant	8	126,456
1	Electrician II	6	110,448	1	Mechanic II	6	110,448
1	Utility Worker II	3	87,684	1	Electrician Foreman	9	135,300
1	Utility Worker II	3	87,684	1	Admin. Assistant	8	126,456
<b>CAMALIGAN FISH PORT</b>							
1	Division Chief II	23	290,688	1	Engineer IV	22	279,528
1	Engineer IV	22	279,528	1	Engineer III	19	243,816
1	Cashier I	10	144,312	1	Admin. Officer I	10	144,312
<b>SUAL FISH PORT</b>							
1	Cashier I	10	144,312	1	Admin. Officer I	10	144,312
153	Total		19,066,356	153	Total		22,718,076

Approved by:

ROLANDO G. ANDAYA, Jr.  
Secretary



**PHILIPPINE FISHERIES DEVELOPMENT AUTHORITY  
STAFFING PATTERN, AS RATIONALIZED**

No. of Position	Office/Position Title	Salary Grade	Rate per Month	Total Monthly Salary
<b>CENTRAL OFFICE</b>				
<b>OFFICE OF THE BOARD SECRETARY</b>				
1	Board Secretary V	24	25,196	25,196
1	Stenographer II	6	9,204	9,204
2	Sub-total			34,400
<b>INTERNAL AUDIT DEPARTMENT</b>				
1	Department Manager III	26	27,250	27,250
1	Secretary I **	7	9,848	9,848
1	Driver II *	4	7,891	7,891
3	Sub-total			44,989
<b>OPERATIONS AUDIT DIVISION</b>				
1	Division Chief II	23	24,224	24,224
1	Internal Auditor III	18	19,168	19,168
1	Internal Auditor II	15	16,093	16,093
1	Internal Auditor II ***	15	16,093	16,093
1	Internal Auditing Assistant	8	10,538	10,538
1	Clerk III *	6	9,204	9,204
6	Sub-total			95,320
<b>FINANCIAL AUDIT DIVISION</b>				
1	Division Chief II	23	24,224	24,224
1	Internal Auditor III	18	19,168	19,168
1	Internal Auditor II	15	16,093	16,093
1	Internal Auditor I	11	12,748	12,748
1	Internal Auditing Assistant	8	10,538	10,538
5	Sub-total			82,771
14	Total, Internal Audit Dept.			223,080
<b>OFFICE OF THE GENERAL MANAGER</b>				
1	General Manager	30	34,939	34,939
1	Executive Assistant III **	20	21,537	21,537
1	Private Secretary II **	15	16,093	16,093
1	Chauffer II **	6	9,204	9,204
4	Sub-total			81,773
<b>OFFICE OF THE ASST. GEN. MANAGER</b>				
1	Asst. General Manager	29	30,653	30,653
1	Executive Assistant II **	17	18,082	18,082
1	Private Secretary I **	11	12,748	12,748
1	Chauffer II **	6	9,204	9,204
4	Sub-total			70,687
<b>PUBLIC INFORMATION DIVISION</b>				
1	Division Chief II	23	24,224	24,224
2	Information Officer III	18	19,168	38,336
1	Information Officer II	15	16,093	16,093
1	Information Officer I	11	12,748	12,748
1	Audio Visual Aids Technician III	10	12,026	12,026
1	Photographer III	10	12,026	12,026
1	Librarian I *	10	12,026	12,026
1	Utility Worker II *	3	7,307	7,307
9	Sub-total			134,786

**PHILIPPINE FISHERIES DEVELOPMENT AUTHORITY  
STAFFING PATTERN, AS RATIONALIZED**

No. of Position	Office/Position Title	Salary Grade	Rate per Month	Total Monthly Salary
<b>LEGAL DIVISION</b>				
1	Legal Officer V	24	25,196	25,196
1	Attorney III	21	22,397	22,397
1	Attorney II	18	19,168	19,168
1	Legal Officer II	17	18,082	18,082
1	Legal Officer I	14	15,181	15,181
1	Legal Assistant I	10	12,026	12,026
2	Utility Worker II *	3	7,307	14,614
<b>8</b>	<b>Sub-total</b>			<b>126,664</b>
<b>CORPORATE PLANNING AND MIS DEPARTMENT</b>				
1	Department Manager III	26	27,250	27,250
1	Secretary I **	7	9,848	9,848
1	Driver II *	4	7,891	7,891
<b>3</b>	<b>Sub-total</b>			<b>44,989</b>
<b>CORPORATE PLANNING DIVISION</b>				
1	Division Chief II	23	24,224	24,224
2	Planning Officer III	18	19,168	38,336
3	Planning Officer II	15	16,093	48,279
1	Planning Officer I	11	12,748	12,748
<b>7</b>	<b>Sub-total</b>			<b>123,587</b>
<b>INFORMATION TECHNOLOGY DIVISION</b>				
1	Division Chief II	23	24,224	24,224
1	Info. Systems Analyst III	19	20,318	20,318
1	Info. Systems Analyst III ***	19	20,318	20,318
1	Computer Programmer III	18	19,168	19,168
1	Computer Programmer II	15	16,093	16,093
1	Computer Maintenance Technologist II	15	16,093	16,093
1	Computer Operator II	9	11,275	11,275
1	Clerk III *	6	9,204	9,204
<b>8</b>	<b>Sub-total</b>			<b>136,693</b>
<b>18</b>	<b>Total, Corporate Planning &amp; MIS Dept.</b>			<b>305,269</b>



**PHILIPPINE FISHERIES DEVELOPMENT AUTHORITY  
STAFFING PATTERN, AS RATIONALIZED**

No. of Position	Office/Position Title	Salary Grade	Rate per Month	Total Monthly Salary
<b>ADMINISTRATIVE SERVICES DEPARTMENT</b>				
1	Department Manager III	26	27,250	27,250
1	Nurse I *	10	12,026	12,026
1	Secretary I **	7	9,848	9,848
1	Clerk III *	6	9,204	9,204
1	Driver II *	4	7,891	7,891
5	Sub-total			66,219
<b>HUMAN RESOURCES DIVISION</b>				
1	Division Chief II	23	24,224	24,224
2	HRM Officer III	18	19,168	38,336
3	HRM Officer II	15	16,093	48,279
1	HRM Assistant ***	8	10,538	10,538
7	Sub-total			121,377
<b>PROCUREMENT &amp; PROPERTY MGT. DIV.</b>				
1	Division Chief II	23	24,224	24,224
1	Supply Officer III	18	19,168	19,168
1	Supply Officer II	14	15,181	15,181
1	Buyer IV	11	12,748	12,748
1	Storekeeper III	9	11,275	11,275
1	Clerk III ***	6	9,204	9,204
1	Utility Worker II *	3	7,307	7,307
7	Sub-total			99,107
<b>GENERAL SERVICES DIVISION</b>				
1	Division Chief II	23	24,224	24,224
1	Records Officer III	18	19,168	19,168
1	Records Officer I	10	12,026	12,026
1	Clerk III ***	6	9,204	9,204
1	Mechanic II *	6	9,204	9,204
3	Security Guard II *	5	8,522	25,566
1	Reproduction Machine Operator *	4	7,891	7,891
1	Driver II *	4	7,891	7,891
1	Utility Worker II *	3	7,307	7,307
11	Sub-total			122,481
30	<b>Total, Administrative Services Dept.</b>			<b>409,184</b>

*mta*

**PHILIPPINE FISHERIES DEVELOPMENT AUTHORITY  
STAFFING PATTERN, AS RATIONALIZED**

No. of Position	Office/Position Title	Salary Grade	Rate per Month	Total Monthly Salary
<b>FINANCE SERVICES DEPARTMENT</b>				
1	Department Manager III	26	27,250	27,250
1	Secretary I **	7	9,848	9,848
1	Driver II *	4	7,891	7,891
3	Sub-total			44,989
<b>BUDGET DIVISION</b>				
1	Division Chief II	23	24,224	24,224
1	Budget Officer III	18	19,168	19,168
2	Budget Officer II	15	16,093	32,186
1	Budget Officer I	11	12,748	12,748
1	Budgeting Assistant	8	10,538	10,538
6	Sub-total			98,864
<b>ACCOUNTING DIVISION</b>				
1	Division Chief II	23	24,224	24,224
2	Accountant III	18	19,168	38,336
2	Accountant II	15	16,093	32,186
1	Financial Analyst II	15	16,093	16,093
1	Financial Analyst I	11	12,748	12,748
2	Accounting Clerk III	8	10,538	21,076
1	Utility Worker II *	3	7,307	7,307
10	Sub-total			151,970
<b>CASH DIVISION</b>				
1	Division Chief II	23	24,224	24,224
1	Cashier III	18	19,168	19,168
1	Cashier II	14	15,181	15,181
1	Cashier II *	14	15,181	15,181
1	Cashier I	10	12,026	12,026
1	Utility Worker II ***	3	7,307	7,307
6	Sub-total			93,087
25	<b>Total, Finance Services Dept.</b>			<b>388,910</b>

**PHILIPPINE FISHERIES DEVELOPMENT AUTHORITY  
STAFFING PATTERN, AS RATIONALIZED**

No. of Position	Office/Position Title	Salary Grade	Rate per Month	Total Monthly Salary
<b>TECHNICAL SERVICES DEPARTMENT</b>				
1	Department Manager III	26	27,250	27,250
1	Secretary I **	7	9,848	9,848
1	Driver II *	4	7,891	7,891
3	Sub-total			44,989
<b>PROJECT PLANNING &amp; ENGINEERING DIVISION</b>				
1	Division Chief II	23	24,224	24,224
1	Engineer IV	22	23,294	23,294
1	Engineer III	19	20,318	20,318
1	Architect III	19	20,318	20,318
1	Project Development Officer III	18	19,168	19,168
1	Engineer II	16	17,059	17,059
2	Project Development Officer II	15	16,093	32,186
2	Project Development Officer I	11	12,748	25,496
1	Engineering Assistant	8	10,538	10,538
1	Clerk III ***	6	9,204	9,204
2	Utility Worker II *	3	7,307	14,614
14	Sub-total			216,419
<b>CONSTRUCTION MANAGEMENT DIVISION</b>				
1	Division Chief II	23	24,224	24,224
1	Engineer IV	22	23,294	23,294
2	Engineer III	19	20,318	40,636
1	Engineer III ***	19	20,318	20,318
1	Engineer II	16	17,059	17,059
1	Clerk III ***	6	9,204	9,204
1	Utility Worker II *	3	7,307	7,307
8	Sub-total			142,042
<b>FACILITIES SERVICES DIVISION</b>				
1	Division Chief II	23	24,224	24,224
1	Engineer IV	22	23,294	23,294
2	Engineer III	19	20,318	40,636
1	Environmental Specialist	18	19,168	19,168
1	Engineer II	16	17,059	17,059
1	Clerk III ***	6	9,204	9,204
7	Sub-total			133,585
32	Total, Technical Services Dept.			537,035



**PHILIPPINE FISHERIES DEVELOPMENT AUTHORITY  
STAFFING PATTERN, AS RATIONALIZED**

No. of Position	Office/Position Title	Salary Grade	Rate per Month	Total Monthly Salary
<b>OPERATIONS SERVICES DEPARTMENT</b>				
1	Department Manager III	26	27,250	27,250
1	Secretary I **	7	9,848	9,848
2	Sub-total			37,098
<b>REGIONAL &amp; MUNICIPAL PROJECT OPERATIONS DIVISION</b>				
1	Division Chief II	23	24,224	24,224
1	Planning Officer III	18	19,168	19,168
1	Project Evaluation Officer III	18	19,168	19,168
1	Planning Officer II	15	16,093	16,093
1	Project Evaluation Officer II	15	16,093	16,093
1	Planning Officer I	11	12,748	12,748
1	Project Evaluation Officer I	11	12,748	12,748
	<u>Field Operations</u>			
5	Fishery Port Supervisor	17	18,082	90,410
1	Fishery Port Supervisor *	17	18,082	18,082
5	Cashier II	14	15,181	75,905
3	Admin. Assistant	8	10,538	31,614
1	Mechanical Plant Operator II *	6	9,204	9,204
12	Security Guard II *	5	8,522	102,264
34	Sub-total			447,721
<b>QUALITY ASSURANCE DIVISION</b>				
1	Division Chief II	23	24,224	24,224
2	Quality Control/Assurance Officer	18	19,168	38,336
2	Sanitation Inspector V	15	16,093	32,186
1	Quality Control/Assurance Inspector	13	14,323	14,323
1	Admin. Assistant	8	10,538	10,538
7	Sub-total			119,607
<b>PROJECT EVALUATION DIVISION</b>				
1	Division Chief II	23	24,224	24,224
1	Project Evaluation Officer III	18	19,168	19,168
2	Project Evaluation Officer II	15	16,093	32,186
1	Project Evaluation Officer I	11	12,748	12,748
5	Sub-total			88,326
48	Total, Operations Services Dept.			692,752
194	CENTRAL OFFICE			3,004,540

*mba*

**PHILIPPINE FISHERIES DEVELOPMENT AUTHORITY  
STAFFING PATTERN, AS RATIONALIZED**

No. of Position	Office/Position Title	Salary Grade	Rate per Month	Total Monthly Salary
<b>NAVOTAS FISH PORT COMPLEX</b>				
<b>OFFICE OF THE PORT MANAGER</b>				
1	Department Manager III	26	27,250	27,250
1	Department Manager I	24	25,196	25,196
1	Information Technology Officer I	19	20,318	20,318
1	Quality Control/Assurance Officer	18	19,168	19,168
1	Planning Officer II	15	16,093	16,093
2	Quality Control/Assurance Inspector	13	14,323	28,646
1	Computer Maintenance Technologist I	11	12,748	12,748
1	Secretary I **	7	9,848	9,848
9	Sub-total			159,267
<b>ADMINISTRATIVE SERVICES DIVISION</b>				
1	Division Chief II	23	24,224	24,224
1	HRM Officer III	18	19,168	19,168
1	Security Officer III	18	19,168	19,168
1	Admin. Officer II	15	16,093	16,093
1	Supply Officer II ***	14	15,181	15,181
1	Records Officer II	14	15,181	15,181
1	Records Officer I	10	12,026	12,026
2	Nurse I *	10	12,026	24,052
1	Computer Operator I ****	7	9,848	9,848
1	Clerk III *	6	9,204	9,204
5	Security Guard II *	5	8,522	42,610
3	Driver II *	4	7,891	23,673
2	Utility Worker II *	3	7,307	14,614
21	Sub-total			245,042
<b>FINANCE SERVICES DIVISION</b>				
1	Division Chief II	23	24,224	24,224
1	Accountant III	18	19,168	19,168
1	Budget Officer III	18	19,168	19,168
1	Cashier III	18	19,168	19,168
1	Credit Officer IV	18	19,168	19,168
1	Credit Officer III	15	16,093	16,093
2	Cashier II	14	15,181	30,362
1	Financial Analyst I	11	12,748	12,748
1	Credit Officer II ***	11	12,748	12,748
3	Credit Officer II *	11	12,748	38,244
4	Credit Officer I *	9	11,275	45,100
1	Disbursing Officer II	8	10,538	10,538
3	Accounting Clerk III	8	10,538	31,614
1	Bookkeeper	8	10,538	10,538
8	Cash Clerk III	8	10,538	84,304
1	Computer Operator I *	7	9,848	9,848
2	Clerk III ***	6	9,204	18,408
5	Utility Worker II ***	3	7,307	36,535
3	Utility Worker II *	3	7,307	21,921
41	Sub-total			479,897

*mb*

**PHILIPPINE FISHERIES DEVELOPMENT AUTHORITY  
STAFFING PATTERN, AS RATIONALIZED**

No. of Position	Office/Position Title	Salary Grade	Rate per Month	Total Monthly Salary
<b>HARBOR OPERATIONS DIVISION</b>				
1	Division Chief II	23	24,224	24,224
2	Harbor Master III	18	19,168	38,336
8	Harbor Master II	15	16,093	128,744
1	Harbor Master II *	15	16,093	16,093
1	Statistician II	15	16,093	16,093
1	Harbor Master I	12	13,512	13,512
1	Computer Operator II ***	9	11,275	11,275
1	Clerk III ***	6	9,204	9,204
1	Communications Eqpt. Operator II ***	6	9,204	9,204
2	Wharfinger I ***	6	9,204	18,408
9	Utility Worker II ***	3	7,307	65,763
28	Sub-total			350,856
<b>MARKET OPERATIONS DIVISION</b>				
1	Division Chief II	23	24,224	24,224
2	Fishery Market Opns. Supervisor I	18	19,168	38,336
6	Fishery Market Opns. Officer III	15	16,093	96,558
1	Statistician II	15	16,093	16,093
10	Fishery Market Opns. Officer II ***	13	14,323	143,230
4	Fishery Market Opns. Officer II *	13	14,323	57,292
1	Admin. Officer I *	11	12,748	12,748
1	Records Officer I *	10	12,026	12,026
1	Admin. Assistant	8	10,538	10,538
3	Clerk III *	6	9,204	27,612
8	Utility Worker II ***	3	7,307	58,456
13	Utility Worker II *	3	7,307	94,991
51	Sub-total			592,104
<b>PORT MAINTENANCE DIVISION</b>				
1	Division Chief II	23	24,224	24,224
1	Engineer IV	22	23,294	23,294
1	Engineer III	19	20,318	20,318
1	Engineer II ***	16	17,059	17,059
1	Engineer I ***	12	13,512	13,512
1	Engineering Assistant	8	10,538	10,538
2	Mechanic II ***	6	9,204	18,408
1	Mechanic II *	6	9,204	9,204
9	Mechanic I *	4	7,891	71,019
1	Welder I *	4	7,891	7,891
2	Driver II *	4	7,891	15,782
1	Utility Worker II ***	3	7,307	7,307
15	Utility Worker II *	3	7,307	109,605
37	Sub-total			348,161
<b>POLICE AND SECURITY DIVISION a/</b>				
1	Division Chief II *	23	24,224	24,224
1	Intelligence Officer III *	18	19,168	19,168
3	Intelligence Agent I *	8	10,538	31,614
1	Clerk III *	6	9,204	9,204
39	Security Guard II *	5	8,522	332,358
45	Sub-total			416,568
232	<b>Total, Navotas Fish Port Complex</b>			<b>2,591,895</b>

a/ The Police and Security Division shall be abolished once the incumbent Division Chief vacates the position. All positions in the PSD shall also be abolished once vacated by the incumbents.

*mke*



**PHILIPPINE FISHERIES DEVELOPMENT AUTHORITY  
STAFFING PATTERN, AS RATIONALIZED**

No. of Position	Office/Position Title	Salary Grade	Rate per Month	Total Monthly Salary
--------------------	-----------------------	-----------------	-------------------	-------------------------

**GENERAL SANTOS FISH PORT COMPLEX**

**OFFICE OF THE PORT MANAGER**

1	Department Manager III	26	27,250	27,250
1	Department Manager I	24	25,196	25,196
1	Information Technology Officer I	19	20,318	20,318
1	Quality Control/Assurance Officer	18	19,168	19,168
1	Planning Officer II	15	16,093	16,093
2	Quality Control/Assurance Inspector	13	14,323	28,646
1	Computer Maintenance Technologist I	11	12,748	12,748
1	Laboratory Technician III	10	12,026	12,026
1	Secretary I **	7	9,848	9,848
10	Sub-total			171,293

**ADMINISTRATIVE SERVICES DIVISION**

1	Division Chief II	23	24,224	24,224
1	HRM Officer III	18	19,168	19,168
1	Security Officer III	18	19,168	19,168
1	Admin. Officer II	15	16,093	16,093
1	HRM Officer II	15	16,093	16,093
1	Records Officer II	14	15,181	15,181
1	Supply Officer I	10	12,026	12,026
1	HRM Assistant ***	8	10,538	10,538
1	Clerk III *	6	9,204	9,204
2	Security Guard II *	5	8,522	17,044
2	Driver II *	4	7,891	15,782
13	Sub-total			174,521

**FINANCE SERVICES DIVISION**

1	Division Chief II	23	24,224	24,224
1	Accountant III	18	19,168	19,168
1	Budget Officer III	18	19,168	19,168
1	Cashier III	18	19,168	19,168
1	Credit Officer III	15	16,093	16,093
1	Cashier II	14	15,181	15,181
1	Financial Analyst I	11	12,748	12,748
2	Cashier I ***	10	12,026	24,052
1	Computer Operator II ***	9	11,275	11,275
1	Disbursing Officer II	8	10,538	10,538
1	Accounting Clerk III	8	10,538	10,538
1	Bookkeeper	8	10,538	10,538
8	Cash Clerk III	8	10,538	84,304
2	Clerk III ***	6	9,204	18,408
3	Bill Collector ***	5	8,522	25,566
5	Utility Worker II ***	3	7,307	36,535
31	Sub-total			357,504

*mfa*

**PHILIPPINE FISHERIES DEVELOPMENT AUTHORITY  
STAFFING PATTERN, AS RATIONALIZED**

No. of Position	Office/Position Title	Salary Grade	Rate per Month	Total Monthly Salary
<b>HARBOR OPERATIONS DIVISION</b>				
1	Division Chief II	23	24,224	24,224
4	Harbor Master III	18	19,168	76,672
8	Harbor Master II	15	16,093	128,744
1	Statistician II	15	16,093	16,093
8	Harbor Master I	12	13,512	108,096
6	Harbor Opns. Assistant	8	10,538	63,228
1	Wharfinger I ***	6	9,204	9,204
2	Lighthouse Keeper II ***	5	8,522	17,044
31	Sub-total			443,305
<b>MARKET OPERATIONS DIVISION</b>				
1	Division Chief II	23	24,224	24,224
1	Fishery Market Opns. Supervisor I	18	19,168	19,168
5	Fishery Market Opns. Officer III	15	16,093	80,465
1	Statistician II	15	16,093	16,093
2	Fishery Market Opns. Officer II ***	13	14,323	28,646
3	Fishery Market Opns. Assistant	8	10,538	31,614
2	Clerk III ***	6	9,204	18,408
8	Utility Worker II ***	3	7,307	58,456
23	Sub-total			277,074
<b>REFRIGERATION DIVISION</b>				
1	Division Chief II	23	24,224	24,224
2	Engineer IV	22	23,294	46,588
3	Engineer III	19	20,318	60,954
2	Engineer II	16	17,059	34,118
2	Electrician Foreman	9	11,275	22,550
2	Mechanic III	9	11,275	22,550
1	Mechanical Plant Operator II ***	6	9,204	9,204
3	Heavy Eqpt. Operator I ***	4	7,891	23,673
5	Heavy Eqpt. Operator I *	4	7,891	39,455
1	Utility Worker II ***	3	7,307	7,307
2	Utility Worker II *	3	7,307	14,614
24	Sub-total			305,237
<b>PORT MAINTENANCE DIVISION</b>				
1	Division Chief II	23	24,224	24,224
1	Engineer IV	22	23,294	23,294
1	Engineer III	19	20,318	20,318
2	Engineer II	16	17,059	34,118
1	Engineer II ***	16	17,059	17,059
2	Electrician Foreman	9	11,275	22,550
1	Draftsman II ***	8	10,538	10,538
1	Electrician I ***	4	7,891	7,891
1	Electrician I *	4	7,891	7,891
2	Mechanic I *	4	7,891	15,782
13	Sub-total			183,665
145	Total, Gen.Santos Fish Port Complex			1,912,599

**PHILIPPINE FISHERIES DEVELOPMENT AUTHORITY  
STAFFING PATTERN, AS RATIONALIZED**

No. of Position	Office/Position Title	Salary Grade	Rate per Month	Total Monthly Salary
<b>DAVAO FISH PORT COMPLEX</b>				
<b>OFFICE OF THE PORT MANAGER</b>				
1	Department Manager III	26	27,250	27,250
1	Planning Officer II	15	16,093	16,093
1	Quality Control/Assurance Inspector	13	14,323	14,323
1	Computer Maintenance Technologist I	11	12,748	12,748
1	Secretary I **	7	9,848	9,848
1	Clerk III *	6	9,204	9,204
6	Sub-total			89,466
<b>ADMINISTRATIVE AND FINANCE SERVICES DIVISION</b>				
1	Division Chief II	23	24,224	24,224
1	Accountant IV ***	22	23,294	23,294
1	Budget Officer III ***	18	19,168	19,168
1	HRM Officer II	15	16,093	16,093
1	Security Officer II	15	16,093	16,093
1	Cashier II	14	15,181	15,181
1	Supply Officer II	14	15,181	15,181
1	Records Officer I	10	12,026	12,026
2	Cashier I	10	12,026	24,052
1	Bookkeeper	8	10,538	10,538
1	Cash Clerk III	8	10,538	10,538
1	Clerk III ***	6	9,204	9,204
1	Bill Collector ***	5	8,522	8,522
1	Driver II ***	4	7,891	7,891
4	Utility Worker II ***	3	7,307	29,228
1	Utility Worker II *	3	7,307	7,307
20	Sub-total			248,540
<b>HARBOR AND MARKET OPERATIONS DIVISION</b>				
1	Division Chief II	23	24,224	24,224
1	Fishery Market Opns. Supervisor I	18	19,168	19,168
1	Fishery Market Opns. Officer III	15	16,093	16,093
1	Harbor Master II	15	16,093	16,093
1	Fishery Market Opns. Officer II ***	13	14,323	14,323
1	Admin. Assistant	8	10,538	10,538
1	Lighthouse Keeper II *	5	8,522	8,522
1	Utility Worker II ***	3	7,307	7,307
8	Sub-total			116,268
<b>PORT MAINTENANCE AND REFRIGERATION DIVISION</b>				
1	Division Chief II	23	24,224	24,224
1	Engineer IV ***	22	23,294	23,294
1	Engineer III	19	20,318	20,318
1	Engineer III ***	19	20,318	20,318
2	Engineer II	16	17,059	34,118
1	Electrician Foreman	9	11,275	11,275
2	Mechanical Plant Operator II ***	6	9,204	18,408
3	Mechanical Plant Operator II *	6	9,204	27,612
1	Mechanic II *	6	9,204	9,204
1	Electrician II *	6	9,204	9,204
2	Heavy Eqpt. Operator I *	4	7,891	15,782
1	Driver II *	4	7,891	7,891
2	Utility Worker II ***	3	7,307	14,614
2	Utility Worker II *	3	7,307	14,614
21	Sub-total			250,876
55	Total, Davao Fish Port Complex			705,150



**PHILIPPINE FISHERIES DEVELOPMENT AUTHORITY  
STAFFING PATTERN, AS RATIONALIZED**

No. of Position	Office/Position Title	Salary Grade	Rate per Month	Total Monthly Salary
<b>ILOILO FISH PORT COMPLEX</b>				
<b>OFFICE OF THE PORT MANAGER</b>				
1	Department Manager III	26	27,250	27,250
1	Planning Officer II	15	16,093	16,093
1	Quality Control/Assurance Inspector	13	14,323	14,323
1	Computer Maintenance Technologist I	11	12,748	12,748
1	Secretary I **	7	9,848	9,848
5	Sub-total			80,262
<b>ADMINISTRATIVE AND FINANCE SERVICES DIVISION</b>				
1	Division Chief II	23	24,224	24,224
1	Accountant III	18	19,168	19,168
1	Budget Officer II	15	16,093	16,093
1	Credit Officer III	15	16,093	16,093
1	HRM Officer II	15	16,093	16,093
1	Security Officer II	15	16,093	16,093
1	Cashier II	14	15,181	15,181
1	Supply Officer II	14	15,181	15,181
1	HRM Officer I	11	12,748	12,748
2	Cashier I	10	12,026	24,052
1	Records Officer I	10	12,026	12,026
1	Buyer III	9	11,275	11,275
1	Bookkeeper	8	10,538	10,538
3	Cash Clerk III	8	10,538	31,614
1	Security Guard III *	8	10,538	10,538
1	Clerk III ***	6	9,204	9,204
1	Bill Collector ***	5	8,522	8,522
2	Security Guard II *	5	8,522	17,044
2	Driver II *	4	7,891	15,782
2	Utility Worker II ***	3	7,307	14,614
2	Utility Worker II *	3	7,307	14,614
28	Sub-total	-		330,697
<b>HARBOR AND MARKET OPERATIONS DIVISION</b>				
1	Division Chief II	23	24,224	24,224
1	Fishery Market Opns. Officer III	15	16,093	16,093
1	Fishery Market Opns. Officer III ***	15	16,093	16,093
1	Harbor Master II	15	16,093	16,093
1	Statistician II *	15	16,093	16,093
2	Fishery Market Opns. Officer II ***	13	14,323	28,646
4	Fishery Market Opns. Officer II *	13	14,323	57,292
1	Communications Eqpt. Operator II ***	6	9,204	9,204
2	Wharfinger I *	6	9,204	18,408
3	Utility Worker II *	3	7,307	21,921
17	Sub-total			224,067
<b>PORT MAINTENANCE AND REFRIGERATION DIVISION</b>				
1	Division Chief II	23	24,224	24,224
1	Engineer IV ***	22	23,294	23,294
3	Engineer II	16	17,059	51,177
2	Engineer II *	16	17,059	34,118
1	Engineering Assistant	8	10,538	10,538
2	Clerk III *	6	9,204	18,408
1	Mechanic II	6	9,204	9,204
1	Mechanical Plant Operator II ***	6	9,204	9,204
4	Mechanical Plant Operator I *	4	7,891	31,564
2	Utility Worker II ***	3	7,307	14,614
9	Utility Worker II *	3	7,307	65,763
27	Sub-total			292,108
77	<b>Total, Iloilo Fish Port Complex</b>			<b>927,134</b>

**PHILIPPINE FISHERIES DEVELOPMENT AUTHORITY  
STAFFING PATTERN, AS RATIONALIZED**

No. of Position	Office/Position Title	Salary Grade	Rate per Month	Total Monthly Salary
<b>LUCENA FISH PORT COMPLEX</b>				
<b>OFFICE OF THE PORT MANAGER</b>				
1	Department Manager III	26	27,250	27,250
1	Planning Officer II	15	16,093	16,093
1	Quality Control/Assurance Inspector	13	14,323	14,323
1	Computer Maintenance Technologist I	11	12,748	12,748
1	Secretary I **	7	9,848	9,848
5	Sub-total			80,262
<b>ADMINISTRATIVE AND FINANCE SERVICES DIVISION</b>				
1	Division Chief II	23	24,224	24,224
1	Accountant III	18	19,168	19,168
1	Budget Officer II	15	16,093	16,093
1	HRM Officer II	15	16,093	16,093
1	Security Officer II	15	16,093	16,093
1	Credit Officer III	15	16,093	16,093
1	Cashier II	14	15,181	15,181
1	Supply Officer II	14	15,181	15,181
1	Records Officer I	10	12,026	12,026
2	Cashier I	10	12,026	24,052
1	Buyer III	9	11,275	11,275
1	Bookkeeper	8	10,538	10,538
3	Cash Clerk III	8	10,538	31,614
1	Bill Collector ***	5	8,522	8,522
1	Security Guard II ***	5	8,522	8,522
3	Security Guard II *	5	8,522	25,566
1	Driver II *	4	7,891	7,891
1	Utility Worker II ***	3	7,307	7,307
1	Utility Worker II *	3	7,307	7,307
24	Sub-total			292,746
<b>HARBOR AND MARKET OPERATIONS DIVISION</b>				
1	Division Chief II	23	24,224	24,224
1	Fishery Market Opns. Officer III	15	16,093	16,093
1	Harbor Master II ***	15	16,093	16,093
1	Harbor Master II	15	16,093	16,093
1	Harbor Master II *	15	16,093	16,093
2	Fishery Market Opns. Officer II ***	13	14,323	28,646
4	Fishery Market Opns. Officer II *	13	14,323	57,292
1	Admin. Assistant	8	10,538	10,538
1	Clerk III *	6	9,204	9,204
2	Utility Worker II *	3	7,307	14,614
15	Sub-total			208,890
<b>PORT MAINTENANCE AND REFRIGERATION DIVISION</b>				
1	Division Chief II	23	24,224	24,224
1	Engineer III	19	20,318	20,318
2	Engineer II	16	17,059	34,118
2	Mechanical Plant Operator II ***	6	9,204	18,408
2	Mechanic II	6	9,204	18,408
1	Electrician II *	6	9,204	9,204
1	Electrician I *	4	7,891	7,891
5	Mechanical Plant Operator I *	4	7,891	39,455
2	Utility Worker II ***	3	7,307	14,614
1	Utility Worker II *	3	7,307	7,307
18	Sub-total			193,947
62	<b>Total, Lucena Fish Port Complex</b>			<b>775,845</b>

*sub*

**PHILIPPINE FISHERIES DEVELOPMENT AUTHORITY  
STAFFING PATTERN, AS RATIONALIZED**

No. of Position	Office/Position Title	Salary Grade	Rate per Month	Total Monthly Salary
<b>ZAMBOANGA FISH PORT COMPLEX</b>				
<b>OFFICE OF THE PORT MANAGER</b>				
1	Department Manager III	26	27,250	27,250
1	Planning Officer II	15	16,093	16,093
1	Quality Control/Assurance Inspector	13	14,323	14,323
1	Computer Maintenance Technologist I	11	12,748	12,748
1	Secretary I **	7	9,848	9,848
5	Sub-total			80,262
<b>ADMINISTRATIVE AND FINANCE SERVICES DIVISION</b>				
1	Division Chief II	23	24,224	24,224
1	Accountant III	18	19,168	19,168
1	Budget Officer II	15	16,093	16,093
1	HRM Officer II	15	16,093	16,093
1	Security Officer II	15	16,093	16,093
1	Cashier II	14	15,181	15,181
1	Cashier II ***	14	15,181	15,181
1	Supply Officer II	14	15,181	15,181
1	Credit Officer II ***	11	12,748	12,748
1	Records Officer I	10	12,026	12,026
2	Cashier I	10	12,026	24,052
1	Bookkeeper	8	10,538	10,538
2	Cash Clerk III	8	10,538	21,076
3	Security Guard II *	5	8,522	25,566
1	Driver II *	4	7,891	7,891
6	Utility Worker II ***	3	7,307	43,842
1	Utility Worker II *	3	7,307	7,307
26	Sub-total			302,260
<b>HARBOR AND MARKET OPERATIONS DIVISION</b>				
1	Division Chief II	23	24,224	24,224
1	Harbor Master IV ***	22	23,294	23,294
1	Harbor Master II	15	16,093	16,093
1	Fishery Market Opns. Officer III	15	16,093	16,093
2	Fishery Market Opns. Officer II ***	13	14,323	28,646
1	Fishery Market Opns. Officer II *	13	14,323	14,323
1	Communications Eqpt. Operator II ***	6	9,204	9,204
5	Utility Worker II *	3	7,307	36,535
13	Sub-total			168,412
<b>PORT MAINTENANCE AND REFRIGERATION DIVISION</b>				
1	Division Chief II	23	24,224	24,224
2	Engineer III	19	20,318	40,636
3	Engineer II	16	17,059	51,177
1	Draftsman II ***	8	10,538	10,538
1	Mechanic II	6	9,204	9,204
1	Electrician II ***	6	9,204	9,204
1	Electrician I *	4	7,891	7,891
2	Mechanical Plant Operator I *	4	7,891	15,782
2	Utility Worker II ***	3	7,307	14,614
16	Utility Worker II *	3	7,307	116,912
30	Sub-total			300,182
74	<b>Total, Zamboanga Fish Port Complex</b>			<b>851,116</b>

*mba*



**PHILIPPINE FISHERIES DEVELOPMENT AUTHORITY  
STAFFING PATTERN, AS RATIONALIZED**

No. of Position	Office/Position Title	Salary Grade	Rate per Month	Total Monthly Salary
<b>CAMALIGAN FISH PORT</b>				
1	Department Manager II	25	26,203	26,203
1	Secretary I **	7	9,848	9,848
2	Sub-total			36,051
<b>ADMINISTRATIVE AND FINANCE SERVICES DIVISION b/</b>				
1	Division Chief II *	23	24,224	24,224
1	Accountant II	15	16,093	16,093
1	HRM Officer II	15	16,093	16,093
1	Supply Officer II	14	15,181	15,181
1	Cashier II	14	15,181	15,181
1	Budget Officer I	11	12,748	12,748
1	Cashier I ***	10	12,026	12,026
1	Bookkeeper	8	10,538	10,538
1	Clerk III *	6	9,204	9,204
2	Security Guard II *	5	8,522	17,044
11	Sub-Total			148,332
<b>PORT OPERATIONS DIVISION b/</b>				
1	Division Chief II ***	23	24,224	24,224
1	Engineer IV ***	22	23,294	23,294
2	Engineer II	16	17,059	34,118
1	Clerk III *	6	9,204	9,204
1	Mechanic II	6	9,204	9,204
1	Mechanical Plant Operator II	6	9,204	9,204
4	Mechanical Plant Operator II *	6	9,204	36,816
2	Mechanical Plant Operator I *	4	7,891	15,782
3	Utility Worker II *	3	7,307	21,921
16	Sub-Total			183,767
29	<b>Total, Camaligan Fish Port</b>			<b>368,150</b>
<b>SUAL FISH PORT</b>				
1	Division Chief III	24	25,196	25,196
1	Engineer II	16	17,059	17,059
1	Harbor Master II	15	16,093	16,093
1	Fishery Market Opns. Officer III	15	16,093	16,093
1	Cashier II	14	15,181	15,181
1	Fishery Market Opns. Officer II	13	14,323	14,323
1	Cashier I ***	10	12,026	12,026
1	Bookkeeper	8	10,538	10,538
1	Mechanic II *	6	9,204	9,204
1	Electrician I *	4	7,891	7,891
2	Utility Worker II *	3	7,307	14,614
12	<b>Total, Sual Fish Port</b>			<b>158,218</b>
686	<b>OPERATING UNITS</b>			<b>8,135,120</b>
880	<b>GRAND TOTAL, PFDA</b>			<b>11,139,660</b>

## Notes:

- \* Position is coterminous with the incumbent (to be abolished once vacated).  
 \*\* Incumbent of the position is coterminous with the official being served.  
 \*\*\* Position is coterminous with the incumbent (to be abolished once vacated and replaced with another position title with the corresponding salary grade). Annex C1 for details.  
 a/ The Police and Security Division (NFPC) shall be abolished once the incumbent Division Chief vacates the position. All positions in the PSD shall also be abolished once vacated by the incumbents.  
 b/ The Administrative and Finance Division and the Port Operations Division (CFP) shall be abolished once the incumbent Division Chiefs of both units vacate their positions.

Approved by:

**ROLANDO G. ANDAYA, Jr.**  
Secretary



And FG

Annex C1

**DETAILS OF CONVERSION OF RATIONALIZED POSITIONS**  
(To be applied once marked positions are vacated by incumbents)

No. of Positions	FROM (For Abolition)			No. of Positions	TO (Replaced Position)		
	Position Title	SG	Salary		Position Title	SG	Salary
	<b>CENTRAL OFFICE</b>						
	<b>INTERNAL AUDIT DEPARTMENT</b>						
	<u>OPERATIONS AUDIT DIVISION</u>						
1	Internal Auditor II	15	193,116	1	Internal Auditor I	11	152,976
	<b>CORPORATE PLANNING AND MIS DEPARTMENT</b>						
	<u>INFORMATION TECHNOLOGY DIVISION</u>						
1	Info. Systems Analyst III	19	243,816	1	Information Systems Analyst II	16	204,708
	<b>ADMINISTRATIVE SERVICES DEPARTMENT</b>						
	<u>HUMAN RESOURCES DIVISION</u>						
1	Human Resource Mgnt. Assistant	8	126,456	1	Human Resource Mgnt. Officer I	11	152,976
	<u>PROCUREMENT &amp; PROPERTY MGT. DIVISION</u>						
1	Clerk III	6	110,448	1	Property Custodian	8	126,456
	<u>GENERAL SERVICES DIVISION</u>						
1	Clerk III	6	110,448	1	Records Officer II	14	182,172
	<b>FINANCE SERVICES DEPARTMENT</b>						
	<u>CASH DIVISION</u>						
1	Utility Worker II	3	87,684	1	Cash Clerk III	8	126,456
	<b>TECHNICAL SERVICES DEPARTMENT</b>						
	<u>PROJECT PLANNING AND ENGINEERING DIVISION</u>						
1	Clerk III	6	110,448	1	Computer Operator II	9	135,300
	<u>CONSTRUCTION MANAGEMENT DIVISION</u>						
1	Engineer III	19	243,816	1	Engineer II	16	204,708
1	Clerk III	6	110,448	1	Computer Operator II	9	135,300
	<u>FACILITIES SERVICES DIVISION</u>						
1	Clerk III	6	110,448	1	Computer Operator II	9	135,300
	<b>OPERATING UNITS</b>						
	<b>NAVOTAS FISH PORT COMPLEX</b>						
	<u>ADMINISTRATIVE SERVICES DIVISION</u>						
1	Supply Officer II	14	182,172	1	Supply Officer I	10	144,312
1	Computer Operator I	7	118,176	1	Human Resource Mgnt. Officer II	15	193,116
	<u>FINANCE SERVICES DIVISION</u>						
1	Credit Officer II	11	152,976	1	Credit Officer III	15	193,116
2	Clerk III	6	220,896	2	Cash Clerk III	8	252,912
5	Utility Worker II	3	438,420	5	Cash Clerk III	8	632,280
	<u>HARBOR OPERATIONS DIVISION</u>						
1	Computer Operator II	9	135,300	1	Harbor Master I	12	162,144
1	Clerk III	6	110,448	1	Harbor Master I	12	162,144
1	Communications Equipment Operator II	6	110,448	1	Harbor Master I	12	162,144
2	Wharfinger I	6	220,896	2	Harbor Master I	12	324,288
1	Utility Worker II	3	87,684	1	Admin. Assistant	8	126,456
8	Utility Worker II	3	701,472	8	Harbor Opns. Assistant	8	1,011,648
	<u>MARKET OPERATIONS DIVISION</u>						
2	Fishery Market Operations Officer II	13	343,752	2	Fishery Market Operations Officer III	15	386,232
8	Fishery Market Operations Officer II	13	1,375,008	8	Fishery Market Operations Officer I	11	1,223,808
8	Utility Worker II	3	701,472	8	Fishery Market Opns. Assistant	8	1,011,648

mb